



# TSB SHOWPLACE

## TSB Theatre

### Technical Specs

NEW PLYMOUTH event venues  
CONFERENCES | EXPOS | FUNCTIONS | EVENTS

npeventvenues.nz  
npeventvenues@npdc.govt.nz  
06 759 6060



# TSB THEATRE SPECIFICATIONS

<p><b>Theatre Capacity</b></p> <p>Stalls 450 Circle 222 Gallery 283</p> <p><b>Total 955</b></p> <p>Boxes For technical use only</p>	<p><b>Orchestra pit</b></p> <p>Width 10.8m Depth 2.05m, extendable to 2.9m (additional cost) Height 600mm Pit floor to stage 1.75m Lower lip 1.38m</p>
<p><b>Stage information</b> 25mm Plywood painted black</p> <p><b>Stage rake</b> 4mm per metre</p> <p><b>Pro-Arch Stage Opening</b> Width 8.93m / Height 7.2m</p> <p><b>Stage depth</b></p> <p>Pro-Arch to back wall 10.9m Apron 1.7m <b>Total depth: 12.6m</b> NB: Pro-Arch to Line 45 (Cyc) 9.3m</p>	<p><b>Loading dock</b></p> <p>Door width 2450mm Door height 5700mm Width of Dock 2700mm Height 850mm</p> <p><b>Stairs to stage</b></p> <p>Removable: 2x sets: 1m width, 6 steps, stage level to stalls over Orchestra Pit 1.2m</p> <p><b>Fire curtain</b></p> <p>Set within the Pro arch NB: Tested prior to each public performance</p>
<p><b>Stage width</b></p> <p>Inside Pro-arch 8.93m P side Wing 4.38m OP Wing 4.24m stepped to 8.4m</p>	
<p><b>Elevations from stage</b></p> <p>Grid Height 17.8m Drift 16.15m Fly Floor 7.4m Rear Paint Bridge 7.1m Fly Floor 7.1m (to lower fixing)</p>	

## Flying

Third Stage Counter weight system - 45 Lines

- Line 1 in use with the house curtain
- Lines 1 - 6 operated from the fly floor
- Lines 7 - 45 - operated from Stage level or breaks can be moved to the fly floor as required

Batten length	12m
Batten width	50mm
Batten height	75mm
Maximum Batten Load	450kg distributed
Maximum point load	250kg
Lighting Truss: LX1, LX2, LX3 - 12m x 300mm ladder truss, with 22 outlets evenly spaced over 10 circuits	
LX4 - 2x 6m Funny Bar.	

## Lineset

1	0.000 (house curtain)	24	5.065
2	0.210	25	5.275
3	0.425	26	5.465 (# 3 border)
4	0.640 LX1	27	5.665 (# 3 legs)
5	0.850	28	5.865
6	1.065	29	6.085 LX3
7	1.270	30	6.260
8	1.485 (# 1 border)	31	6.460
9	1.695 (# 1 Legs)	32	6.660
10	1.910		Principal
11	2.120	33	7.195
12	2.335	34	7.380
13	2.550	35	7.560
	Principal	36	7.755 (# 4 border)
14	3.070 (# 2 border)	37	7.930 (# 4 legs)
15	3.265 (# 2 legs)	38	8.110
16	3.470	39	8.295 LX4 (cyc lights)
17	3.670	40	8.480
18	3.870 LX2	41	8.650
19	4.065	42	8.845
20	4.270	43	9.030
21	4.475 (Mid Stage Tab Curtain )	44	9.210 (Smother)
22	4.670	45	9.395 (cyc)
23	4.870		

## Rigging - stage

5x I beams running from up to downstage - 1T point load SWL per beam.

## Rigging - FOH

Gallery Lighting Rail - Max 30kg per metre, or 70kg point load spaced minimum of 3m apart  
 3x points approx 2.5m downstage of the fire curtain. 250Kg SWL per point  
 4x points approx 1m downstage of the fire curtain. 1000kg SWL per point  
 2x 50mm access holes approx 400mm downstage of the fire curtain

## Main Curtain

375g Red velvet central opening tab track or flown

## Tabs

Black heavy weight wool serge

## Smother

Black heavy weight wool serge

## Legs and Borders

4x sets black heavy weight velvet leg width 3m drop 8.6m  
 4x sets black heavy weight wool serge borders width 12m - drop 3.2m

## Cyclorama

PVC - Colour: Milky white - width 13m - drop 8m



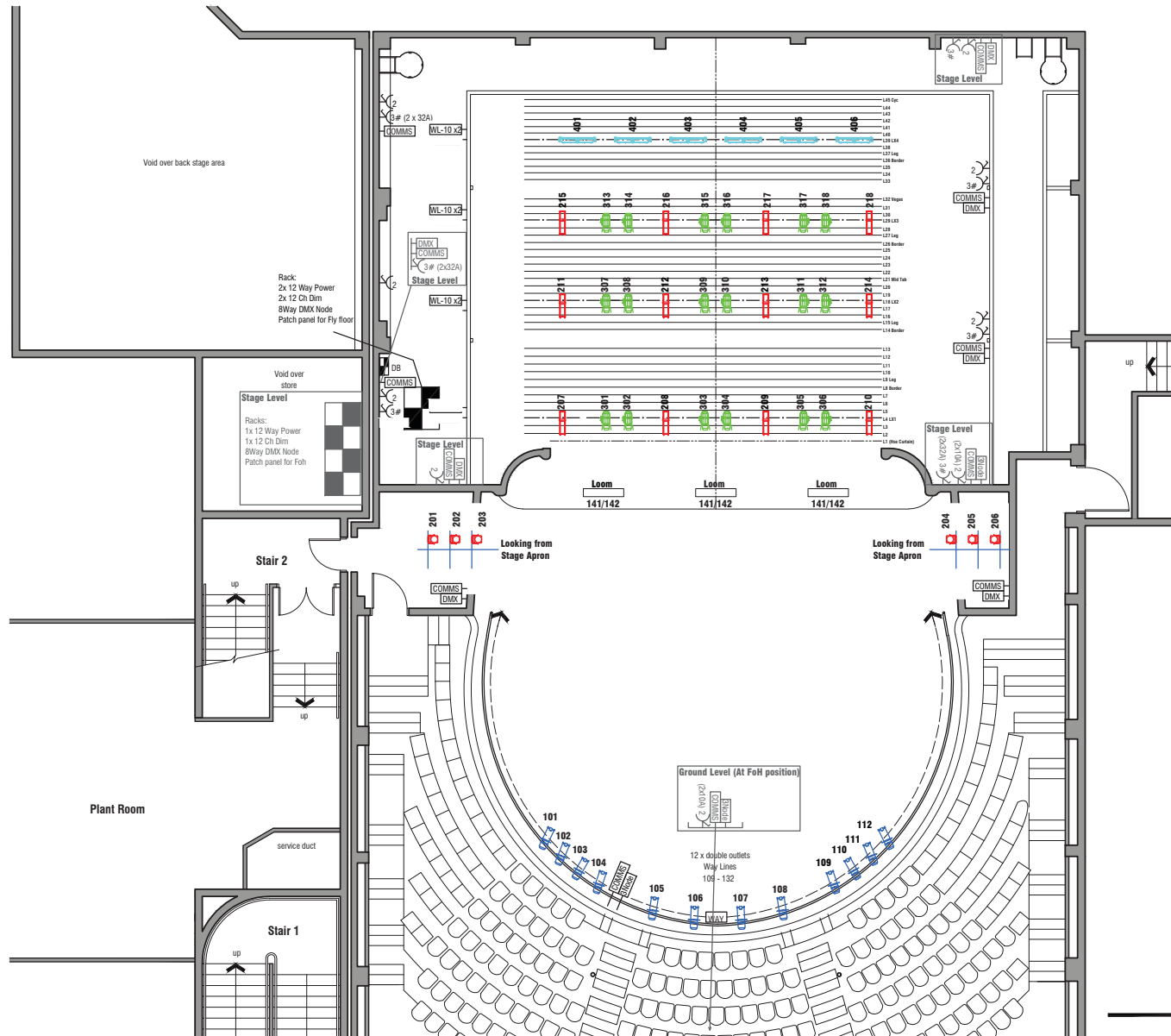
<b>Power</b>	<p>400amp max venue current capacity  1x set power lock connectors (off stage OP side)  1x 63amp (off stage OP side)  21x PDL Cat 56 40amp sockets in various locations</p>	<b>Lighting equipment contd.</b>	LED stage work lights are mounted on each LX Bar - not DMX controlled																
<b>Power locations</b>	<table border="0"> <tr> <td>Stage</td> <td>2x DSP 1x DSOP 1x CSOP 1x USP 1x USOP</td> <td>Fly floor</td> <td>4x 40a 3ph DSOP (all used by House LX rig)</td> </tr> <tr> <td>Lighting Bunker</td> <td colspan="3">6x (2 used for House LX rig)</td> </tr> <tr> <td>Front of house</td> <td colspan="3">1x OP Circle Box 1x P Circle Box 2x Ceiling above Pro arch</td> </tr> <tr> <td>Follow spot box</td> <td colspan="3">Follow spot box 1x PDL 40a 3ph 1x CEEform 32a 3ph outlets. <i>NB:</i> Maximum current capacity of Followspot box sub board is 63A</td> </tr> </table> <p>40x FOH Waylines from Lighting bunker to Gallery rail and Boxes</p>	Stage	2x DSP 1x DSOP 1x CSOP 1x USP 1x USOP	Fly floor	4x 40a 3ph DSOP (all used by House LX rig)	Lighting Bunker	6x (2 used for House LX rig)			Front of house	1x OP Circle Box 1x P Circle Box 2x Ceiling above Pro arch			Follow spot box	Follow spot box 1x PDL 40a 3ph 1x CEEform 32a 3ph outlets. <i>NB:</i> Maximum current capacity of Followspot box sub board is 63A			<b>Hire Lighting</b>	Follow spot: 1x Selecon Performer 1200w MSR Follow spot: 1x Selecon Rua 9-16° <i>NB:</i> depending on availability
Stage	2x DSP 1x DSOP 1x CSOP 1x USP 1x USOP	Fly floor	4x 40a 3ph DSOP (all used by House LX rig)																
Lighting Bunker	6x (2 used for House LX rig)																		
Front of house	1x OP Circle Box 1x P Circle Box 2x Ceiling above Pro arch																		
Follow spot box	Follow spot box 1x PDL 40a 3ph 1x CEEform 32a 3ph outlets. <i>NB:</i> Maximum current capacity of Followspot box sub board is 63A																		
		<b>Comms</b>	Corded Belt packs and headsets can be hired in upon request (can be installed in all relevant areas)																
		<b>Sound</b>	No sound installed in the TSB Theatre																
		<b>Sound levels</b>	<b>Not to exceed 100db at control position.</b>																
		<b>Control position</b>	Positioned OP side of centre section stall level Width 4.6m Depth 1.8m  Due to the fire regulations, no cables are to be run underneath the fire curtain directly behind the Pro Arch.																
<b>Lighting equipment</b>	<p>1 x Zero88 FLX Lighting Console</p> <p><u>Gallery Rail</u></p> <p>12x Ecl profile FW VW</p> <p><u>Box Perches</u></p> <p>Circle Box Perches</p> <p>6x ECL Profile CTPLUS (3 per box)</p> <p><u>Over stage</u></p> <p>18 x LED Fresnel RGBAL DMX Zoom CCS3 with barn doors</p> <p>12x ECL profile CTPLUS</p> <p>6 x ECL Cyclorama 100</p> <p>6 x ladders ( line from Fly Floor Bridge)</p> <p>Houselight control - FOH Control position, Prompt corner, or via DMX</p> <p>2 x 12 way 2.4kw Distro Fly Floor</p> <p>1 x 12 way 2.4kw Distro Lighting Bunker</p> <p>1 x 12way 2.4kw dimmer Lighting Bunker</p>																		

<b>Green room</b>	Under stage, stair access only from OP and P 2x two-seater black leather couches 2x black leather tub chairs Large vintage table with 8 chairs TV – and stage 2x full length mirrors
<b>Kitchen area</b>	- central island with drawers and power - 3x bar stools - side bench with 4x bar stools, 3x USB charging points - Ever boiler zip - Microwave - double-draw dishwasher - 2x 380 ltr fridges - Complimentary tea & coffee for 6 pax (instant)
<b>First Aid kit</b>	On top of fridge in Green room
<b>Dressing Rooms</b>	Off Green Room (cap 30+) 1– 8 each fitted out with: 1x TV picturing live stage image and sound 1x basin (hot water) 3x mirrors with side makeup lights 3x chairs Ceiling-hung clothes rail 1.m long 9 -10 lower level dressing rooms (cap 50 +) each fitted with: 1x TV picturing live stage image and sound 2x basins (hot water) 5x mirrors with side makeup lights Chairs Ceiling Hung clothes rail 2m long
<b>In addition:</b>	Room 1 - wall heater Room 7 – lockable (key available on request) Rooms 5 & 8 – have additional mirrors

<b>Showers</b>	2x private cubicle off the green room
<b>Laundry</b>	1x 8kg washing machine (Dream queen) Wash times are 45 minutes no short wash 1x 4.5kg dryer 1x laundry tub 1x iron board 1x steam iron
<b>Internet</b>	Free-high speed WIFI access for Hirer and standard free public WIFI
<b>Parking</b>	One carpark is allocated for per venue. If additional parking is required please contact Operations Supervisor. Unauthorised vehicles will be towed at owner's cost.
<b>Additional staff</b>	Additional staff can be arranged at an extra cost: Please refer to Schedule A in the venue hire contract for rates.

**Additional lighting and sound hire can be arranged through the operations team.**

<b>Further information</b>	Enquiries should be addressed to: Operations Supervisor TSB Showplace Private Bag 2025 New Plymouth 4342  DDI: +64 (0) 6 759 2552 CEL: +64 (0)27 432 6860 <a href="mailto:david.liggett@npdc.govt.nz">david.liggett@npdc.govt.nz</a>
----------------------------	--



**Electrical Key**

- Single 10amp Power Outlet
- Double 10amp Power Outlet
- 3 Phase Power Outlet
- Data Outlet
- Light switch
- Camera
- Comms Panel
- Work Light Dimmers
- DMX Comms Panel
- House light control
- Paging System
- Patch Panel
- Way Lines
- DMX
- Distribution Board
- Main Switch Board
- eLC 3 Channel DMX Node
- Wieland 10pin outlet for lighting Bars

**Lighting Key**

- Prolights CT+ (25-50deg)
- Prolights FWV+ (15-30deg)
- ShowPro LED Fresnel RGBAL
- Prolights Eclipse Cyc 100

Note: Fitting Numbers references fittings from a control perspective  
Other information like DMX addressing is in the Supplied Table

# NEW PLYMOUTH event venues

CONFERENCES | EXPOS | FUNCTIONS | EVENTS

**TSB** SHOWPLACE



TSB *Stadium*



npeventvenues.nz  
npeventvenues@npdc.govt.nz  
06 759 6060

