



TSB SHOWPLACE

Theatre Royal

Technical Specs

NEW PLYMOUTH event venues
CONFERENCES | EXPOS | FUNCTIONS | EVENTS

npeventvenues.nz
npeventvenues@npdc.govt.nz
06 759 6060



THEATRE ROYAL SPECIFICATIONS

Venue Description Rectangular black box theatre built in 1998 on basement level with a combination of flat floor and tiered retractable seating installed in 2010.

Theatre Capacity

Seating	527
Cabaret	336 theatre with 120 at round tables
Banquet	340 at tables
Flat Floor	550

(Company size may impact upon maximum auditorium capacity).

Auditorium (337m²):

Wide	16.90m
Length	19.95m
Height	5.00m

Stage Information:

Stage 25mm plywood painted black

Stage rake Flat

Stage opening 14.2m Pros Height 4.07m

Grid elevation 4.65m

Stage depth 8.80m

Stage width 15.85m

1.6m - OP wing

1.6m - P wing

Stage height Auditorium floor to stage height - 0.5m

Fixed Grid (no counterweight):

Number of loads	Wt / point load
1	500kg at intersection
1	225kg centre of span
2	170kg at third point
3	110kg at quarter points

Curtain information: Gold velvet central opening tab track operated from OP

Tabs 1x set black velour tabs at 4.8m
1x set black velour tabs at 8.8m (backdrop)

Masking Legs 5x sets black 525gm velour legs
4.330m long x 2.775m wide

Boarders 5x black wool serge 565gm masking border
15.2wide .580m drop

Cyclorama White filled gauze 8.7m installed upon request

Power 1x PDL CAT 56 5pin 40amp USP stage level
6x PDL Cat56 5 pin 40amp sockets Mezzanine floor OP (note 4x used for House Dimmers and Distros)

Comms Corded belt packs and headsets can be hired in upon request.



Lighting Equipment Zero88 FLX S48 Lighting Console
Over Stage
 18 x LED Fresnel RGBAL DMX Zoom CCS3 with barn doors
 4 x Ecl Cyclorama 100
FOH LX Rail
 8 x ECL profile CTPLUS
 6x Truss Looms in various locations back to dimmers (4x on stage, 2x front of house)

House Light RGBW LED house lights
 Touch panel control at the front of the auditorium or via DMX

Sound No sound installed in the Theatre Royal

Sound Levels Not to exceed 100db at control position

Control Positions Theatre style - centre of auditorium
 Flat floor - varying options
 House connections - Centre Back of Auditorium, OP back of Auditorium (retracted seating only), DS OP Stage wings
 Cable Duct with Draw rope available down OP wall -
 Approx 35m from Control position to stage



Loading Dock Door width 2.45m
 Door height 5.70m
 Width of Dock 2.70m
 Height .85m

Load in stage access Via goods lift

Goods Lift Lift dimensions 3.6m x 2.6m x 2.6m high
 Door width 2.29m
 Maximum load 4000kg



Green room Back stage
 Kitchen area
 Ever boiler zip
 Microwave
 Fridge / Freezer
 1x tables and various chairs
 TV with live stage picture
 First aid kit

Dressing Rooms: Dressing room located in the Green Room (cap 15)
2 mirrored walls with mirror lights above the mirrors
2x wall continuous bench under mirrors
5x curtain cubical
3x basins (hot water)
2x shower areas/toilets
1x disabled toilet
Men's urinals

Additional staff Additional staff can be arranged at an extra cost. Please refer to Schedule A in the venue hire contract for rates.

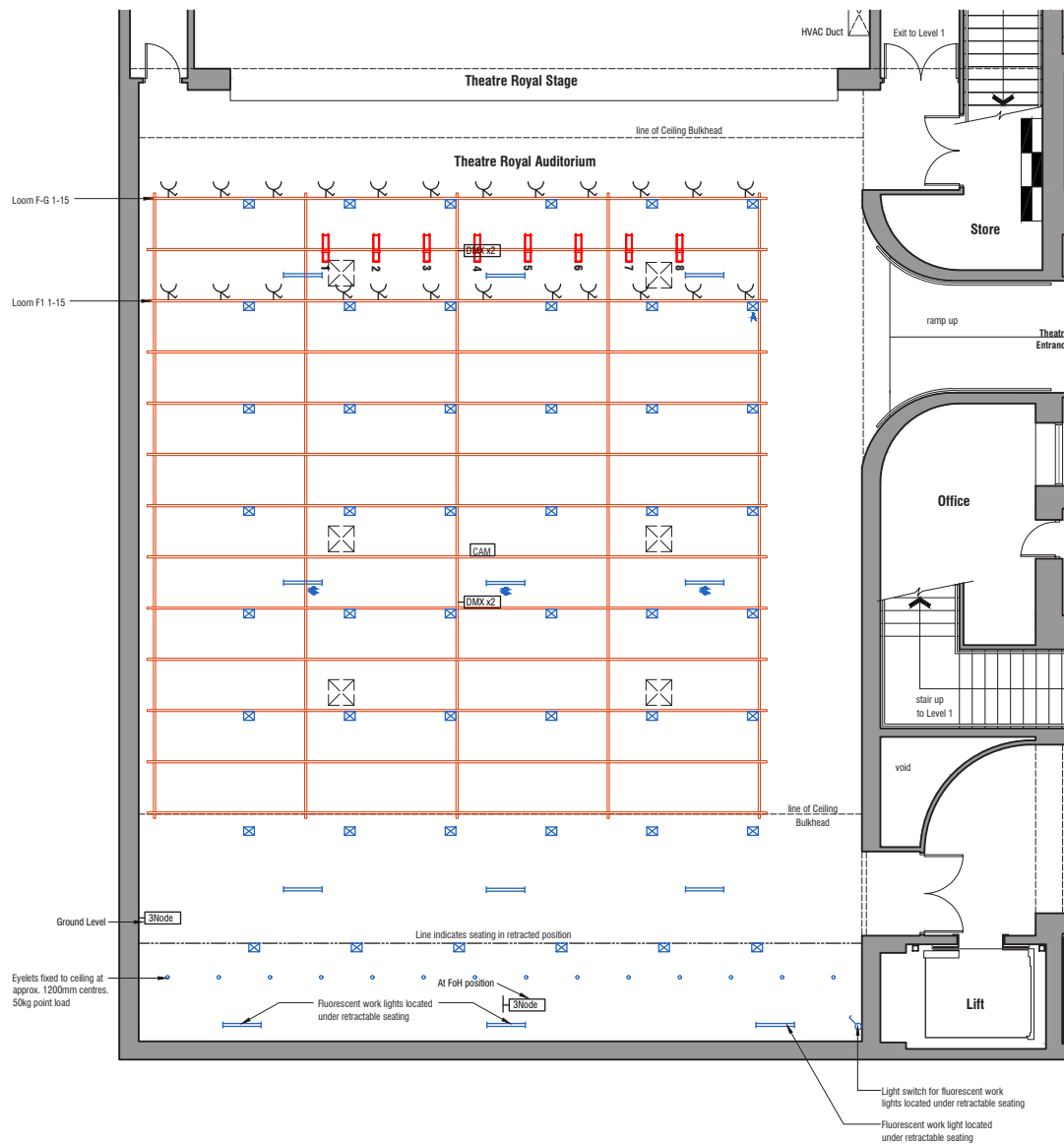
Additional lighting and sound hire can be arranged through the operations team.

Further information Enquiries should be addressed to:
Operations Supervisor
TSB Showplace
Private Bag 2025
New Plymouth 4342

DDI: +64 (0) 6 759 2552
CEL: +64 (0)27 432 6860
david.liggett@npdc.govt.nz

Internet Free high speed WIFI access for Hirer and Standard free public WIFI.

Parking One car park is allocated per venue. If additional parking is required please contact Operations Supervisor. Unauthorised vehicles will be towed away or clamped at the owner cost.



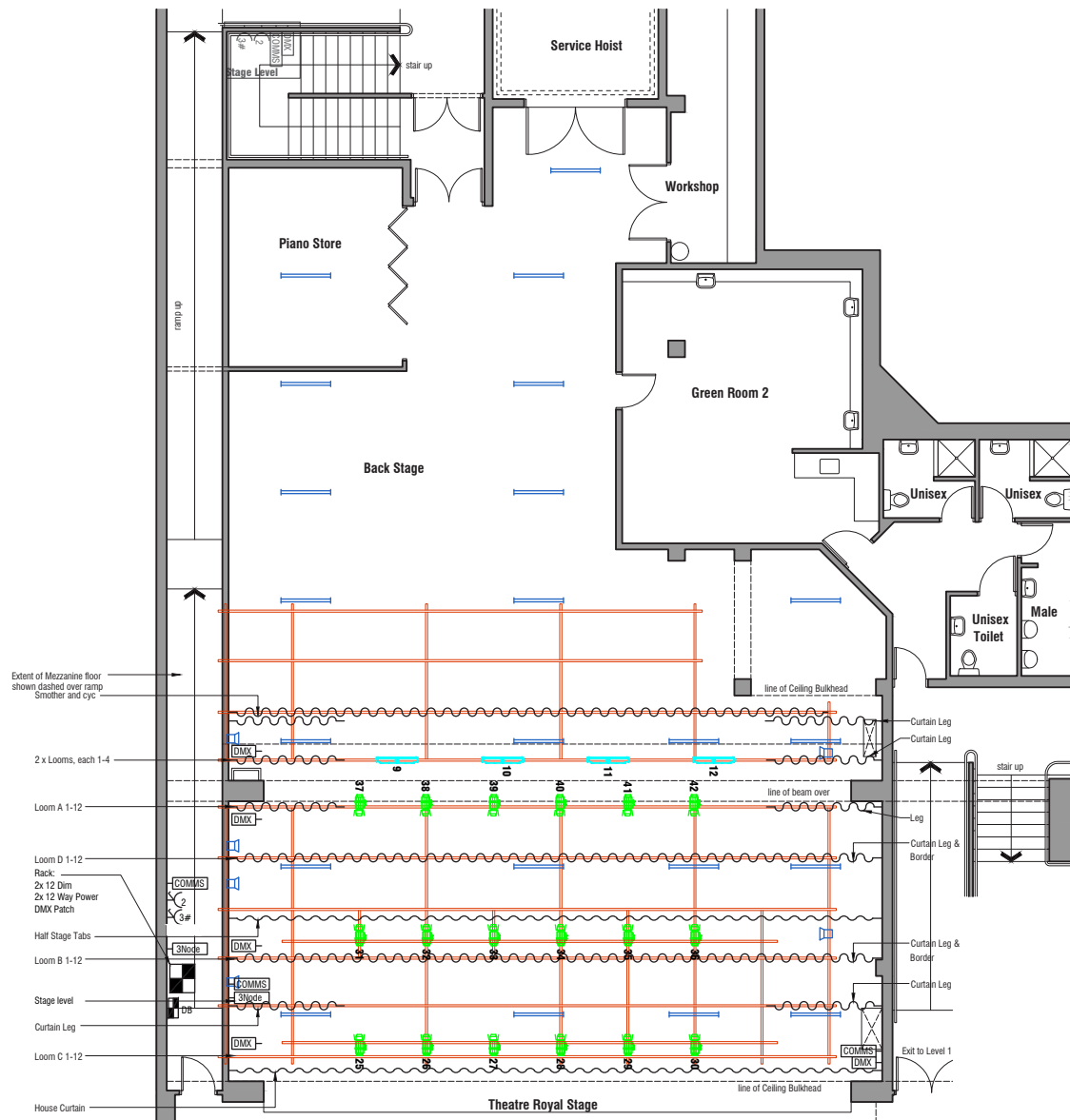
Lighting Key

- House Lights
- Fluorescent lights
- Stage Blue Lights
- HVAC ceiling grille
- Prolights CT+ (25-50deg)
- ShowPro LED Fresnel RGBAL
- Prolights Eclipse Cyc100

Note: Fitting Numbers references fittings from a control perspective
Other information like DMX addressing is in the Supplied Table

Electrical Key

- Single 10amp Power Outlet
- Camera
- ELC 3 Channel DMX Node
- DMX Comms Panel



Lighting Key

- House Lights
- Fluorescent lights
- Stage Blue Lights
- HVAC ceiling grille
- Prolights CT+ (25-50deg)
- ShowPro LED Fresnel RGBAL
- Prolights Eclipse Cyc100

Note: Fitting Numbers references fittings from a control perspective
Other information like DMX addressing is in the Supplied Table

Electrical Key

- Double 10amp Power Outlet
- Single 10amp Power Outlet
- CAM Camera
- 3Node ELC 3 Channel DMX Node
- DMX DMX Comms Panel

NEW PLYMOUTH event venues

CONFERENCES | EXPOS | FUNCTIONS | EVENTS

TSB SHOWPLACE



TSB *Stadium*



npeventvenues.nz
npeventvenues@npdc.govt.nz
06 759 6060

